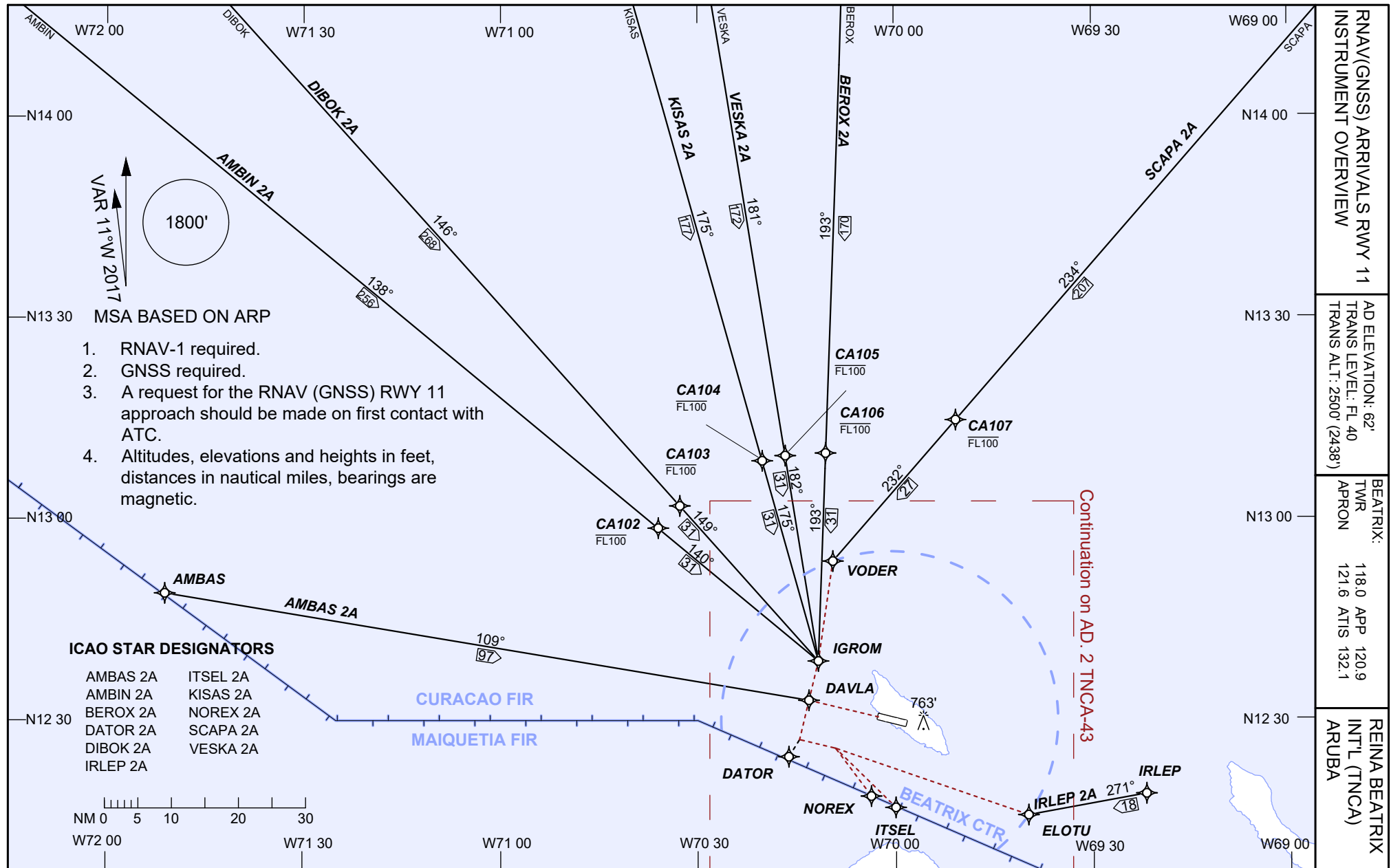


**AIP DUTCH CARIBBEAN**

CHANGES: STAR designators.



**RNAV(GNSS) ARRIVALS RWY 11  
INSTRUMENT OVERVIEW**

**AD ELEVATION: 62'  
TRANS LEVEL: FL 40  
TRANS ALT: 2500' (2438')**

**BEATRIX:  
TWR  
APRON  
118.0 APP 120.9  
121.6 ATIS 132.1**

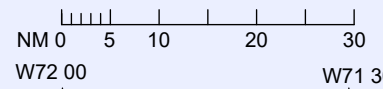
**REINA BEATRIX  
INT'L (TNCA)  
ARUBA**

VAR 11°W 2017  
1800'

- MSA BASED ON ARP**
1. RNAV-1 required.
  2. GNSS required.
  3. A request for the RNAV (GNSS) RWY 11 approach should be made on first contact with ATC.
  4. Altitudes, elevations and heights in feet, distances in nautical miles, bearings are magnetic.

**ICAO STAR DESIGNATORS**

AMBAS 2A	ITSEL 2A
AMBIN 2A	KISAS 2A
BEROX 2A	NOREX 2A
DATOR 2A	SCAPA 2A
DIBOK 2A	VESKA 2A
IRLEP 2A	



Continuation on AD 2 TNCA-43